



# Shell Lubricant Solutions

# Shell Oils



Shell Oils

Shell Grease

Shell Diesel  
Engine Oils

Shell Automotive  
Transmission Oils

Shell Industrial  
Gear Oils

Technology and  
Technical Services



# Hydraulic Oils



## Shell Tellus S2 M Range

Product	Product Description
Shell Tellus S2 M 32	Shell Tellus S2 M fluids are high performance hydraulic fluids that use Shell's unique patented technology to provide outstanding protection and performance in most manufacturing and many mobile equipment operations.
Shell Tellus S2 M 46	
Shell Tellus S2 M 68	
Shell Tellus S2 M 100	

## Shell Tellus S2 V Range

Product	Product Description
Shell Tellus S2 V 32	Shell Tellus S2 V fluids are high performance hydraulic fluids with excellent viscosity control under both severe mechanical stress across a wide range of temperatures. They provide outstanding protection and performance in most mobile equipment and other applications subject to wider ranges of temperatures
Shell Tellus S2 V 46	
Shell Tellus S2 V 68	
Shell Tellus S2 V 100	

## Shell Tellus S3 M Range

Product	Product Description
Shell Tellus S3 M 32	Shell Tellus S3 M hydraulic fluids are high performance lubricants that use exclusive zinc-free technology to provide outstanding protection and performance in most manufacturing and many mobile equipment operations.
Shell Tellus S3 M 46	
Shell Tellus S3 M 68	
Shell Tellus S3 M 100	



# Shell Grease



Shell Oils

Shell Grease

Shell Diesel  
Engine Oils

Shell Automotive  
Transmission Oils

Shell Industrial  
Gear Oils

Technology and  
Technical Services



# Grease & Specialties



## Shell

Product	Product Description
Gadus S2 V100 2	Shell Gadus S2 V199 2 is a general-purpose grease based on a lithium hydroxystearate thickener fortified with anti-oxidant, anti-wear and anti-rust additives. Main applications include Electrical motor bearings, rolling element, and plain greased lubricated bearings.
Gadus S2 V220 2	Shell Gadus S2 V220 greases are designed for multipurpose grease lubrication of rolling element and plain bearings as well as hinges and sliding surfaces such as those found in most industrial sectors.
Gadus S2 V220 AC 2	Shell Gadus S2 V220 AC greases are high quality multi-purpose greases based on high viscosity index mineral oil and mixed lithium/calcium soap thickener. They contain EP, AW, and anti-oxidation and anti-corrosion additives to enhance their performance in a wide range of applications.
Gadus S2 220 AD 2	Shell Gadus S2 AD Greases are high performance greases for the lubrication of bearings subject to harsh conditions. They are multi-purpose greases with solids to provide resistance to shock loads.
Gadus S3 V220 C2	Shell Gadus S2 V220 C greases are premium multi-purpose greases based on high viscosity index mineral oil and lithium complex soap thickeners. They contain the latest additives to offer excellent high temperature oxidation performance and other additives to enhance its anti-oxidation, anti-wear, and anti-corrosion properties. These greases are especially suitable for bearings operating at high temperatures and under load.
Gadus S3 V460 D2	Shell Gadus S3 V460 D greases are high performing high temperature greases for slow moving heavily loaded large bearings subject to shock loads. They are based on high viscosity index mineral oil and lithium complex soap thickeners. Apart from containing the latest additives to ensure excellent high temperature, anti-corrosion & anti-oxidation performance, they also contain solids to ensure the grease can handle shock loads.
Gadus S2 HS Coupling Grease	Shell Gadus S2 High Speed Coupling Grease is specially formulated with lithium soap/polymer thickener, which has superior resistance to oil separation when subjected to the high centrifugal forces normally found in couplings.



# Grease & Specialties



## Shell Gadus

Product	Product Description
Gadus S1 OG 1600	Shell Gadus S1 OG 1600 is a blend of bitumen, highly refined mineral oils, selected EP additives, and high flash point, non-chlorinated, volatile aliphatic diluent ensuring fluidity during application, even at low temperatures.
Gadus S3 OG 1	Shell Gadus S3 OG 1 is a premium Open Gear and wire rope grease made of Aluminium complex soap thickeners.
Gadus S3 Wire rope	Shell Gadus S3 Wire rope grease is a tacky, high quality, lithium soap-based grease incorporating multifunctional, extreme pressure additives, finely dispersed graphite, and molybdenum disulphide. Shell Gadus S3 Wire rope grease exhibits outstanding load carrying capacity in bearings operating up to the maximum rated speed for grease lubrication in the temperature range of -15 °C to 70 °C. The temperature range can be increased to 90° C for operating at 75% of the maximum rated speed.
Gadus Rock Drill	Shell Gadus Rock Drill grease is a light brown, lithium/calcium soap based semi-fluid grease developed especially for lubrication of pneumatic rockdrills operated under the harsh conditions often found in South African mining operations.
Gadus S4 OG Clear 20000	Shell Gadus S4 OG Clear 20000 oil is an advanced part synthetic, non-bitumastic viscous lubricant specifically developed to satisfy the demands of heavily loaded open gearing.
Malleus GL 3500	Shell Malleus GL 3500 is a full EP Grease developed for the lubrication and protection of open gears subject to extremes of ambient temperature and operating conditions. Shell Malleus GL 3500 combines high performance with environmentally safe chemistry that minimizes the cost of disposal and provides optimum performance, providing a tenacious lubricant film that resists 'fling off'.
Malleus OGM Heavy	Shell Malleus OGM Heavy is primarily designed for use in very heavy applications, and operations under severe conditions, in mining equipment, shovels, draglines, and excavators in open-cut operations. Open Gear Lubricant for ball mills and kilns. Malleus OGM Heavy is based upon an Aluminium Complex soap thickener dispersed in a high viscosity, very high quality mineral base oil containing enhanced extreme pressure – anti-wear chemistry.



# Shell Diesel Engine Oils



Shell Oils

Shell Grease

Shell Diesel Engine Oils

Shell Automotive Transmission Oils

Shell Industrial Gear Oils

Technology and Technical Services



# Heavy Duty Diesel Engines

Vivo energy



## Shell Gadus

Product	Product Description
Rimula R2 30	Shell Rimula R2 oils use proven combinations of additives that react to the needs of your engine. They feature an enhanced acid-control system for added protection and long life. Each dedicated additive releases its protective energy when needed to ensure reliability and consistent protection against deposits and wear with tough long-lasting action.
Rimula R2 40	
Rimula R2 10W	
Rimula R2 Extra 15W-40	
Rimula R4 X 15W-40	Shell Rimula R4 X is designed to provide Triple Protection to improve engine and oil durability. It helps maintain and increases reliability of vehicles. It is suitable for most heavy-duty diesel engines for on and off-highway applications.
Rimula R4 L 10W-40	Shell Rimula R4 L oils use "Low-SAPS" additives technology to protect low emission engines under severe conditions. It delivers improvements in wear and deposits control, and resistance to breakdown under high temperatures compared to previous oils.
Rimula R6 M 10W-40	Shell Rimula R6 M features advanced multi-functional additive technology in fully synthetic base oil systems to deliver high responsive protection that continuously adapts to your driving conditions. Protection is further enhanced through formulation synergies that enhance the activity of the oil resulting in maintenance saving long drain performance coupled with excellent protection against soot induced wear, piston and engine deposits and fuel economy capability.





# Shell Automotive Transmission Oils



Shell Oils

Shell Grease

Shell Diesel Engine  
Oils

Shell  
Automotive  
Transmission  
Oils

Shell Industrial  
Gear Oils

Technology and  
Technical Services



# Shell Spirax ATF



Product	Product Description
Spirax S1 ATF	Shell Spirax S1 ATF TASA is a high-quality automotive transmission, power steering, hydraulic oil mainly used for heavy-duty vehicles working in an 'off-road' environment.
Spirax S2 ATF D2	Shell Spirax S2 ATF is a high-quality transmission fluid suitable for many passenger cars and heavy-duty automatic transmission, power steering and hydraulics fluid application.
Spirax S4 ATF HDX	Shell Spirax S4 ATF is a superior quality automatic transmission fluid suitable for a wide range of heavy-duty automotive transport and passenger car transmissions. Based on synthetic technology base fluid, Spirax S4 ATF HDX is the ultimate performance automatic transmission fluid allowing extended drain intervals even under the most severe conditions.



# Automotive Gear Oils, Axles and Differentials

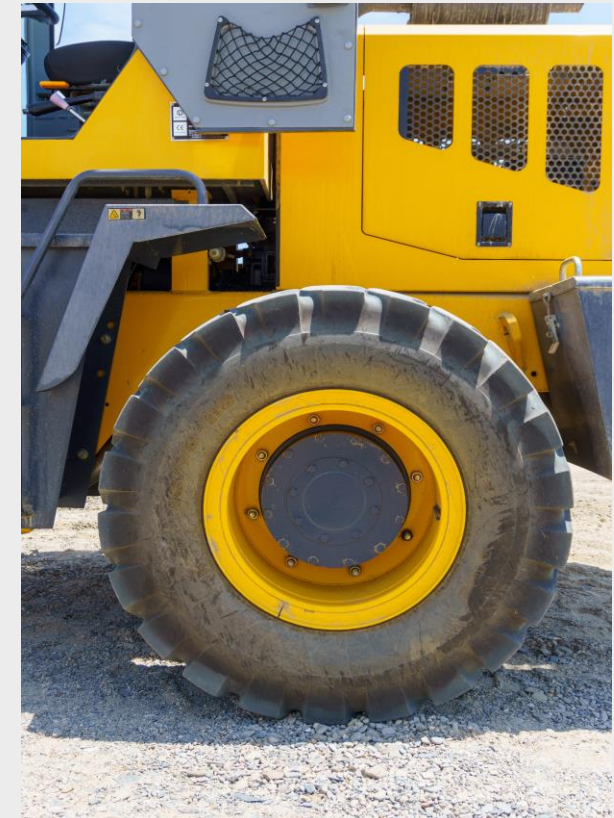


## Shell Spirax Range

Product	Product Description
Spirax S4 CX 10	Shell Spirax S4 CX is designed to provide operators with trouble free operation and maximum reliability for the lifetime of the equipment. Spirax S4 CX meets the demanding requirements of the modern transmission, final drive, oil immersed brakes, and hydraulic systems fitted to heavy duty off highway.
Spirax S4 CX 10	
Spirax S4 CX 50	

Product	Product Description
Spirax S2 A 80W-90	Spirax S2 A oils are blended for use in a wide variety of automotive axle units subjected to heavy duty conditions. High quality API GL-5 for axles.
Spirax S2 A 85W-140	

Product	Product Description
Spirax S2 ALS 90	Spirax S2 A oils are blended for use in a wide variety of automotive axle units subjected to heavy duty conditions. High quality API GL-5 for axles.
Spirax S2 G 80W-90	Shell Spirax S2 G is an automotive gear lubricant containing multi- functional additives required for mild extreme pressure conditions. High quality API GL-4 for Manual Transmission Gear Sets



# Shell Industrial Gear Oils



Shell Oils

Shell Grease

Shell Diesel Engine  
Oils

Shell Automotive  
Transmission Oils

Shell Industrial  
Gear Oils

Technology and  
Technical Services



# Industrial Gear Oils



## Shell Omala Range

Product	Product Description
Omala S2 GX 68 Omala S2 GX 100 Omala S2 GX 150 Omala S2 GX 220 Omala S2 GX 320 Omala S2 GX 460 Omala S2 GX 680	Shell Omala S2 GX oils are high quality extreme-pressure oils designed primarily for the lubrication of heavy-duty industrial gearboxes. Their high load carrying capacity, protection against micropitting, and compatibility with seals and paints combine to offer excellent performance in enclosed gear applications.
Omala S4 GXV 150 Omala S4 GXV 220 Omala S4 GXV 320	Shell Omala S4 GXV is an advanced synthetic heavy duty industrial gear oil, approved by Siemens AG offering outstanding lubrication performance under severe operating conditions, including reduced friction, long service life, high resistance to micro-pitting for optimal gear protection and superb compatibility with seals.
Omala S3 GP 1500	
Omala S4 WE 220 Omala S4 WE 320	Shell Omala S4 WE is an advanced synthetic heavy duty industrial worm drive gear oil formulated using specially selected polyalkylene glycol base fluids and additives. It offers outstanding lubrication performance under severe operating conditions, including improved energy efficiency, long service life and high resistance to micro-pitting.
Omala S4 Wheel 680	Shell Omala S4 Wheel is an advanced synthetic heavy duty industrial gear oil offering outstanding lubrication performance under severe operating conditions, including improved energy efficiency and long service life. It is recommended specifically for use in General Electric Off-Highway Motorized Wheels fitted to haul trucks used in mining applications.



# Compressor Oils

Vivo energy



## Corena Range

Product	Product Description
Corena S3 R 46	Shell Corena S3 R is a premium quality air compressor oil designed to deliver high performance lubrication of rotary sliding vane and screw compressors. It uses an advanced additive system to provide excellent protection and performance for compressors running with oil maintenance intervals up to 4000 hours.
Corena S3 R 68	
Corena S4 R 46	Shell Corena S4 R is primarily an advanced synthetic air compressor oil designed to deliver the highest performance lubrication of rotary sliding vane and screw air compressors. It uses a unique advanced additive system to provide excellent protection and performance for compressors running with oil maintenance intervals of 10000 hours and up to 12000 hours under certain conditions. Shell Corena S4 R is also perfectly suitable to cover applications where a synthetic bearing & circulating oil & RO is required.
Corena S4 R 68	



# Technology and Technical Services



Shell Oils

Shell Grease

Shell Diesel Engine  
Oils

Shell Automotive  
Transmission Oils

Shell Industrial  
Gear Oils

Technology  
and Technical  
Services



# Technology and Technical Services



Shell Lubricant Solutions: Innovative and integrated value adding solutions for sustainable mining.

Our expertise lies in providing the highest quality lubricants alongside the proper lubrication processes and technical services that create sustainable value for customers.



## Shell RemoteSense

Real-Time Condition Monitoring

Real-time Condition Monitoring that provides Intelligent lubricant-condition monitoring services that combine technical expertise with advanced analytics. Increase asset health and utilization, reduced unplanned downtime, extended equipment life, optimized maintenance.



## Shell LubeCoach

Training Program

A customized training program, led by Shell technical experts with substantial in-field experience, which offers practical coaching to customers' staff on lubricant management techniques.



## Shell LubeExpert

Technical Experts

A dedicated teams of highly trained technicians - Lubricants Service Experts (LSEs) - spend most of their time at customer sites, inspecting critical machinery like excavators, draglines, shovels, mills and kilns, and identifying potential lubrication issues.



## Shell LubeAnalyst

Oil Analysis

A global oil and equipment monitoring service that helps customers assess lubricant condition, identify potential problems, and benchmark equipment performance against comparable oil samples from around the world.



# Technology and Technical Services



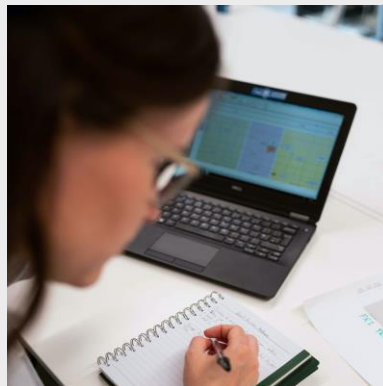
## Shell LubeMatch

A free online tool that provides instant lubricant recommendations for a wide variety of vehicles. Available online ([www.shell.com/lubematch](http://www.shell.com/lubematch)) or as a mobile app.



## Shell LubeAdvisor

A cost-effective, efficient and non-invasive service aimed at companies that want to prevent breakdowns and unscheduled maintenance.



## Oren Emissions Management

This digital solution helps you understand, through live dynamic reporting, where mining can effectively take actions to reduce emissions. With proactive operational and strategic data-driven decisions ensuring the ensure processes, people and data are aligned to optimize emission management.



## FuelActive

A unique, innovative solution to the problem of fuel contamination in diesel engines. Its revolutionary pickup unit uses a floating pickup pipe that draws clean fuel from the top of the tank, thus avoiding the harmful contaminants that settle at the bottom.



**Thank you**

